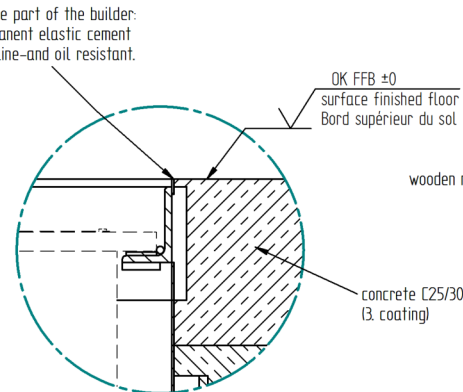
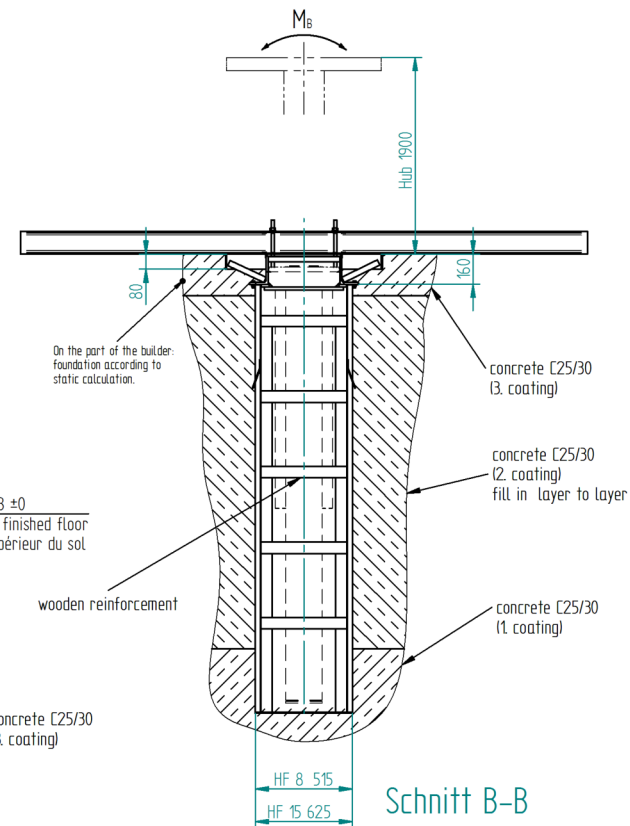


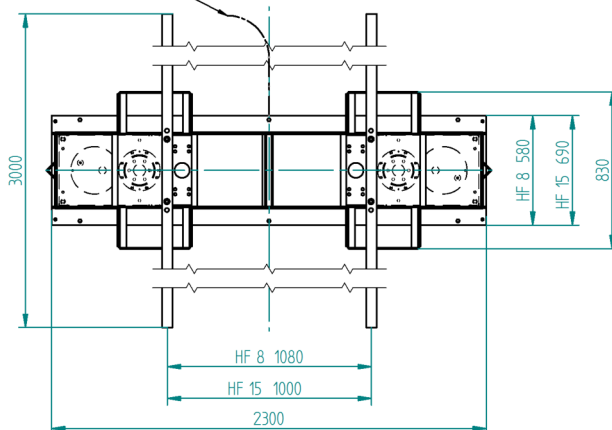
Schnitt A-A



EINZELHEIT D



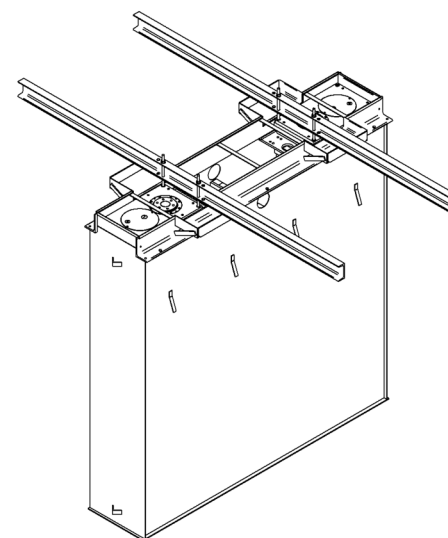
Schnitt B-B



Short operating
instruction with type plate

On the part of the builder
electric supply line
5 x 6 mm²
32 Ampere prefuse
driving power 8,2 kW
3x400V/NPE/50Hz

Control panel on
part of the builder.



weight data:

	HF 8	HF 15
load capacity	80 kN	150 kN
dead weight	20 kN	20 kN
bending moment of each cylinder	7120 Nm	15300 Nm

The pit has to be built away of earth pressure caused by
the local building loads.
Relevant ground values according to DIN 1055.

The electric control cabinet must be installed close to the lift.
If the lift is used as wash lift the electric control cabinet must be
sufficiently away from the "wet zone" or installed in another room.

For control purposes the architect's structural design drawings
are to be sent to the manufacturer of the lift.

All dimensions in mm

Subject to alterations

Installation drawing				Issue	Modification before modification	Name	Date
Workflow status		Scale 125 (15, 120, 150)		Project 1			
Bereitstellung nicht fertigungsrelevant		Info					
Foundation type							
Drawn	Date	Name	Designation 1 HYDR. 2 RAM LIFT				
Validated	19.03.2015	Becker	Designation 2 HF 8 / 15				
		Designation 3					
Maschinenfabrik J. A. BECKER & SOEHNE Neckarsulm GmbH & Co. KG		Document no.	315862	Product key	5982800		
		Blatt 11 / Page 1	Ident-No.		7001070		
		Subst.	Subst.				